

2012 - "GREAT WHITE SHARK EXPEDITION"

Written by Direttore

Tuesday, 06 March 2012 14:21 - Last Updated Tuesday, 13 March 2012 14:14



GANSBAAI

IX Spedizione scientifica
13 - 22 APRILE

I Spedizione didattica
17- 26 MARZO

CENTRO STUDI SQUALI

SULLE ORME DEL GRANDE SQUALO BIANCO
SUDAFRICA 2012

The image is a promotional poster for a shark expedition. It features a large photograph of a shark breaching the ocean surface, creating a massive splash. The shark is dark-colored with a lighter patch on its side. In the upper right corner, there is a logo for 'CENTRO STUDI SQUALI' (Shark Study Center) which includes a stylized illustration of a shark's head with its mouth open, showing sharp teeth. The text on the poster is in various colors: red for 'GANSBAAI', blue for the expedition names, and yellow for the dates. The main title at the bottom is in white and yellow.



2012 - "GREAT WHITE SHARK EXPEDITION"

Written by Direttore

Tuesday, 06 March 2012 14:21 - Last Updated Tuesday, 13 March 2012 14:14

DIARIO DI BORDO

1^ SPEDIZIONE DIDATTICA 2012

IX^ SPEDIZIONE SCIENTIFICA 2012 "SULLE ORME DEL GRANDE SQUALO BIANCO"



L'EQUIPE DI STUDIO 2012

2012 - "GREAT WHITE SHARK EXPEDITION"

Written by Direttore

Tuesday, 06 March 2012 14:21 - Last Updated Tuesday, 13 March 2012 14:14



["SQUALO BIANCO" NEWS](#)



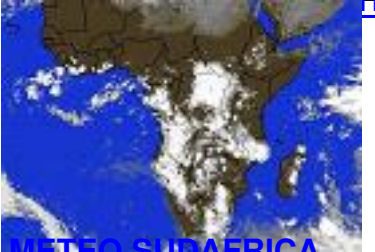
["GRANDI NOTIZIARIE" DEL "GRANDE SQUALO BIANCO"](#)



[PHOTO GALLERY 2012](#)



[PUBBLICAZIONI SCIENTIFICHE](#)



[METEO SUBAERICA](#)

